

2023 PRINCESS F55, SEAS THE DAY

GBP 1,580,000



Specification

Length Overall	17.68 m (58 ft)	Engine	2 x VOLVO D13-900
Beam	4.87 m (16 ft)	Engine Hours	535 Hours
Draft	1.41 m (4 ft 7 in)	Drive Type	IPS POD DRIVE
Cabins	4	Fuel Tank	2,750 [L]
Hull Material	FIBERGLASS	Water Tank	620 [L]
Location	PHUKET, THAILAND	Builder	PRINCESS YACHTS



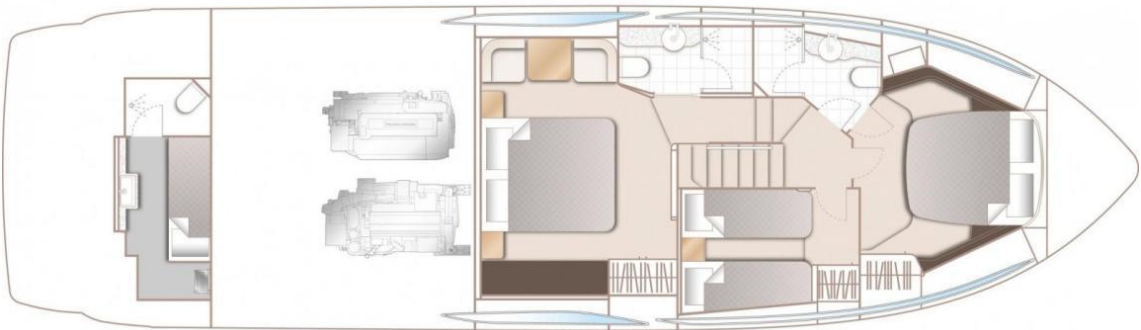
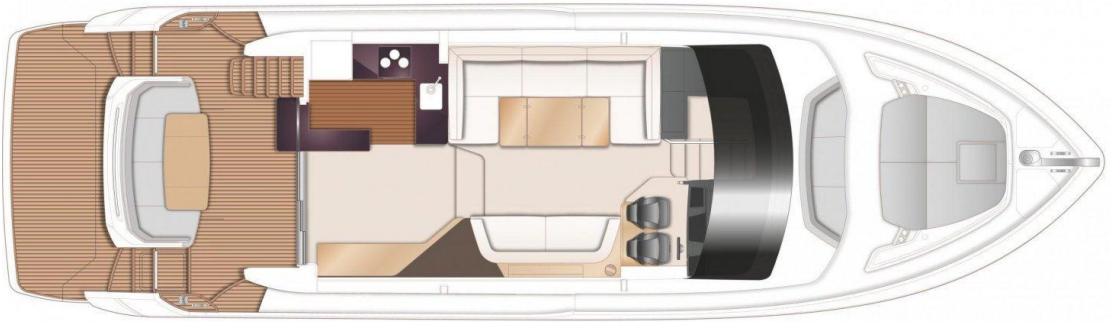
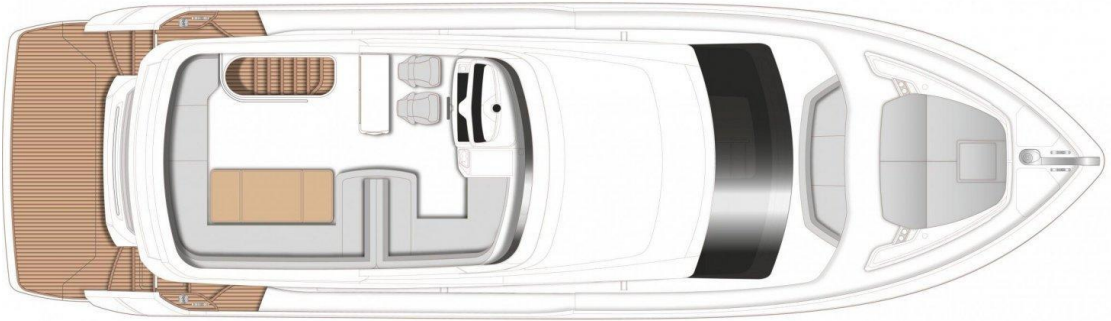
Description

The Princess F55 *Seas The Day* is a luxury motor yacht built by Princess Yachts UK, combining timeless design with advanced technology. Privately owned and carefully maintained, this yacht offers an exceptional blend of performance, comfort, and style. Designed for tropical cruising and long-range voyages, it is equipped with premium specifications that enhance both practicality and onboard enjoyment.

Among its standout features are the electro-hydraulic bathing platform for effortless tender launch and water access, and Seakeeper 9 gyro stabilisation which ensures smooth handling whether underway or at anchor. The yacht is powered by an ONAN 17.5 kW generator, supporting full tropical air-conditioning and electrical systems. Lifestyle enhancements include underwater lights for evening ambience, a freshwater maker for extended autonomy, and a fully fitted aft cabin with private WC and shower. Docking and manoeuvring are made effortless with the addition of a sternthruster and joystick control.

This vessel represents a rare opportunity to acquire a well-specified Princess F55 in excellent condition, ready to deliver a premium yachting experience in Southeast Asia.

Layout





PEN MARINE

Optional Equipment Fitted

Dimensions:

- Length Overall: 58ft (17.68m)
- Max Draft: 4 ft 7in (1.41m)
- Beam: 16ft (4.87m)
- Water Tank: 620 Litre
- Fuel Tank: 2,750 Litre

Engines and Drive:

- Twin Volvo D13-900 (2 x 900mhp) diesel engines
- Engine running hours: 535/535 (January 2026)
- Volvo joystick control (dual station) with low speed manoeuvring in 'docking mode' and steering at any speed in 'driving mode'. Operates engines, steering and thruster(s) including stern thruster when fitted (includes upgrading standard bow thruster to 210KgF variable speed)
- HOLD FUNCTION DOCKING FACILITY, includes fitting a 170 kgf variable speed sternthruster
- To supply and fit new Pininfarina design steering wheel to both lower and flybridge helm stations

Stabilisation:

- Gyro Stabilisation (Seakeeper 9) - Includes upper helm control via the chart plotter screens

Hull Colour:

- White Hull

Interior Furniture:

- Walnut interior wood Satin finish (includes all galley units) (galley floor is planked walnut as standard)
- Timber flooring to aft saloon area in same finish as galley floor (walnut or light oak)
- Teak laid flybridge deck

Layout:

- Aft Cabin fit out (single berth with separate WC and shower)
- Saloon full size dining / coffee table (in place of standard coffee or dining table) with twin electrically operated leg mechanisms. Table reduces in length by 50% when folded and has a sliding mechanism to allow for use as a coffee table

Galley:

- Galley countertop are Sylmar White Solid Surface as standard to match the bar top (NB. Cockpit bar top will match galley countertop selection)

Bathroom:

- Bathroom vanity tops are Carrera White Solid Surface (gloss finish) with Koko White Solid Surface (satin finish) Solid Surface floors
- Stainless douche fitted in both bathrooms next to toilets
- Stainless douche fitted in crew cabin heads

Generator:

- ONAN 17.5 kW/50 Hz generator in place of standard. (the 17.5 kW generator is recommended when gyro stabilisers or aircon are specified)
- Generator running hours: 1540 (January 2026)

Deck Hardware:

- Transom platform to have electro-hydraulic raise/lower facility (450Kg SWL) with keyway plates and slider system to enable the later fitting of a dinghy chocks. Please note if both Gyro and Passerelle are fitted, the dinghy weight must not be greater than 125kg)
- Additional 20m of 10mm anchor chain to give a total of 60 metres

Electrical:

- UK 220v/240v sockets
- Electric griddle/BBQ fitted to flybridge wetbar (Kenyon)
- Foredeck freshwater anchor / deckwash system
- Freshwater maker with autoflush and remote
- Combination Washing machine/Dryer fitted below companionway stairs
- Dishwasher fitted in galley (slimline - 9 place setting)
- Weatherproof multizone socket in cockpit area
- Additional socket in master stateroom under coffee table
- Replace standard hob with Bosch Serie 4 Induction Hob (4 zones)



PEN MARINE

Optional Equipment Fitted

- Underwater transom lights (4 LUMISHORE SMX53 White & Blue)
- To supply and fit 1 x weatherproof multizone socket on flybridge (location to be confirmed by client)

Audio Visual & Communications:

- Deck Saloon - 50" LED TV on a powered lift with Fusion Apollo MSRA770 with AM/FM/Bluetooth/DAB/WIFI and external USB. Paired with Fusion speakers (2)
- Apple TV 4K connected to saloon TV
- Apple TV 4K connected to master stateroom TV
- Master stateroom – Fusion SRX-400 Radio/Wi-Fi / Bluetooth. Paired with Fusion speakers (2).
- Master stateroom TV & Audio Package - 43" LED TV with Fusion Apollo MS-RA770 with AM/FM/Bluetooth/DAB/Wifi and external USB, in place of Fusion SRX-400
- Flybridge – Fusion SRX-400 Radio/Wi-Fi/Bluetooth. Paired with waterproof Fusion speakers (2), linked to saloon audio unit
- Includes 2 x Fusion ARX-70 wireless remotes in black (supplied loose for later fitting)
- Cockpit Audio Package: 2 x Waterproof Fusion speakers linked to saloon audio unit with local control (Fusion SRX-400)
- Wi-Fi network
 - On board Ethernet network and 4G internet capability
 - On board WIFI network incorporating external WIFI and 3G/4G antenna for extended range. Enabling connectivity to onshore WIFI networks throughout the vessel including crew and external guest areas.(Mobile internet connectivity requires an activated mobile data SIM card.)
(Note: SIM card is not included)
Note: this is included in Premium Audio option

Navigation:

- The Princess F55 is fitted with Garmin 16" multifunction displays (with chartplotter/GPS with external aerial) at both control positions as well as dual station autopilot. Volvo engines have a 7" display for engine instrumentation at both control positions. Where Volvo engines are fitted the 16" screen incorporates Volvo software to allow engine instrumentation and autopilot function displays (as well as the 7" display) (NB If a second 16" screen is ordered it will be fitted immediately in front of the helm with the engine instrumentation display to starboard)
- Garmin XHD colour radar with 24", 4Kw Radome (with display on standard 16" screen with allows separate or split displays with standard chartplotter and engine instrumentation)
- Garmin remote control keypad (GRID) at the upper helm position
- Garmin GMI20 4" multifunction display at upper helm (for separate display and control of individual functions e.g. log and echo sounder)
- Camera mounted on aft flybridge with view of bathing platform linked to navigation screens at both lower and upper helm stations
- Garmin AIS Class B transponder interfaced with chartplotters
- Rest of World version plotter
- International VHF
- Second 16" colour multifunction display fitted at lower helm position
- Second 16" colour multifunction display at the upper helm

AirConditioning:

- Airconditioning/heating reverse cycle (78,000 BTU) suitable for temperatures to 40°C (tropical) With controls in all cabins and outlets in all areas (including bathrooms) Recommended generator : 17.5kW
- Aft cabin air conditioning Condensing unit 6,000BTU supplying 6,000BTU unit (with SMX control) and separate outlet in toilet



PEN MARINE

Optional Equipment Fitted

Holding tanks/toilets:

- Electric overboard discharge system in addition to standard manual system. (As well as the electric pump an electrically operated valve is fitted in the discharge line so that the seacock does not need to be operated every time the system is used. The seacock itself is fitted with a micro switch so that the pump cannot operate when the seacock is closed)
- Aft cabin toilet to be connected into holding tank system

Exterior Upholstery / Canvas / Covers:

- Cockpit, Flybridge and foredeck seating with contrast piping to underside of base cushions in Comfort Exterior III Met with Met, Vogue or Hitch contrast
- Foredeck sunbed cushion (with adjustable headrest) in Comfort Exterior III Met
- Exterior covers - Grey canvas
- Bimini Top – Grey canvas
- Additional charge for bimini to have LED overhead dimmable lighting (switched from console)
- White mesh windscreen covers in place of standard black

Accessories:

- Stools for use at dinette in forward saloon area (x2) (NB- lockers below cabin berth will accommodate 2 stools)

Owners Comments:

- Privately used only
- Last engine service – July 2024
- Last generator service – August 2024
- Last haul-out and antifoul – March 2025



PEN MARINE



PEN MARINE SDN BHD (Co. No. 23640-X)
3A-1-12 Straits Quay, Seri Tanjung Pinang,
Tanjung Tokong, 10470 Pulau Pinang, Malaysia

info@penmarine.com
www.penmarine.com

Tel: +6012-488 0880
+6019-488 1188

















PEN MARINE



PEN MARINE SDN BHD (Co. No. 23640-X)
3A-1-12 Straits Quay, Seri Tanjung Pinang,
Tanjung Tokong, 10470 Pulau Pinang, Malaysia

info@penmarine.com
www.penmarine.com

Tel: +6012-488 0880
+6019-488 1188



PEN MARINE



PEN MARINE SDN BHD (Co. No. 23640-X)
3A-1-12 Straits Quay, Seri Tanjung Pinang,
Tanjung Tokong, 10470 Pulau Pinang, Malaysia

info@penmarine.com
www.penmarine.com

Tel: +6012-488 0880
+6019-488 1188



PEN MARINE



PEN MARINE SDN BHD (Co. No. 23640-X)
3A-1-12 Straits Quay, Seri Tanjung Pinang,
Tanjung Tokong, 10470 Pulau Pinang, Malaysia

info@penmarine.com
www.penmarine.com

Tel: +6012-488 0880
+6019-488 1188



PEN MARINE



PEN MARINE SDN BHD (Co. No. 23640-X)
3A-1-12 Straits Quay, Seri Tanjung Pinang,
Tanjung Tokong, 10470 Pulau Pinang, Malaysia

info@penmarine.com
www.penmarine.com

Tel: +6012-488 0880
+6019-488 1188



**PEN MARINE SDN. BHD. IS THE REGISTERED AGENT OF THE
LANGKAWI INTERNATIONAL YACHT REGISTRY (LIYR)**

*New Yacht Registration (Private & Commercial), Entity Registration,
Ownership Transfer, Yacht Name Change, Annual Tonnage Renewal,
Deletion Certificate*



PEN MARINE

MALAYSIA • THAILAND • SINGAPORE • INDONESIA • CHINA