

2020 Leopard 40

USD430,000



Specification

Length Overall	39 ft 4 in	Engine	2 x Yanmar 3YM30C
Beam	22 ft 1 in	Engine Hours	1,577 Hours
Draft	4 ft 1 in	Drive Type	Sail Drive
Cabins	3	Fuel Tank	360 [L]
Hull Material	Fiberglass	Water Tank	780 [L]
Location	Phuket, Thailand	Builder	Robertson & Caine



Description

The Leopard 40's innovative interior layout, increased volume in the hulls, and expanded windows and doors that blur the lines between inside and out combine to make the interior space feel like a larger yacht. The unique forward-facing galley stands in front of a large window with an adjacent access door to the forward platform. Aft, a forward-facing settee and dining table are separated from the aft cockpit seating area by sliding glass doors. These doors and windows enhance the open concept feel, allow for exceptional ventilation, and facilitate easy navigation in and around the yacht.

HIGHLIGHTS:

- 3 cabin "owners version" layout with 2 heads
- Ash white interior finish
- Generator
- Air-conditioning
- Solar panels
- Electric winch at helm station with foot activator switch
- Custom davit system (stainless steel) with electric winch
- *Low current engine and genset hours for an ex-charter vessel and much more...



PEN MARINE



PEN MARINE SDN BHD (Co. No. 23640-X)
3A - 1 - 12 Straits Quay, Seri Tanjung Pinang,
Tanjung Tokong, 10470 Pulau Pinang, Malaysia.

info@penmarine.com
www.penmarine.com

Tel: +6012 488 0880
Tel: +6019 488 1188



PEN MARINE



PEN MARINE SDN BHD (Co. No. 23640-X)
3A - 1 - 12 Straits Quay, Seri Tanjung Pinang,
Tanjung Tokong, 10470 Pulau Pinang, Malaysia.

info@penmarine.com
www.penmarine.com

Tel: +6012 488 0880
Tel: +6019 488 1188



PEN MARINE



PEN MARINE SDN BHD (Co. No. 23640-X)
3A - 1 - 12 Straits Quay, Seri Tanjung Pinang,
Tanjung Tokong, 10470 Pulau Pinang, Malaysia.

info@penmarine.com
www.penmarine.com

Tel: +6012 488 0880
Tel: +6019 488 1188



PEN MARINE



PEN MARINE SDN BHD (Co. No. 23640-X)
3A - 1 - 12 Straits Quay, Seri Tanjung Pinang,
Tanjung Tokong, 10470 Pulau Pinang, Malaysia.

info@penmarine.com
www.penmarine.com

Tel: +6012 488 0880
Tel: +6019 488 1188



PEN MARINE



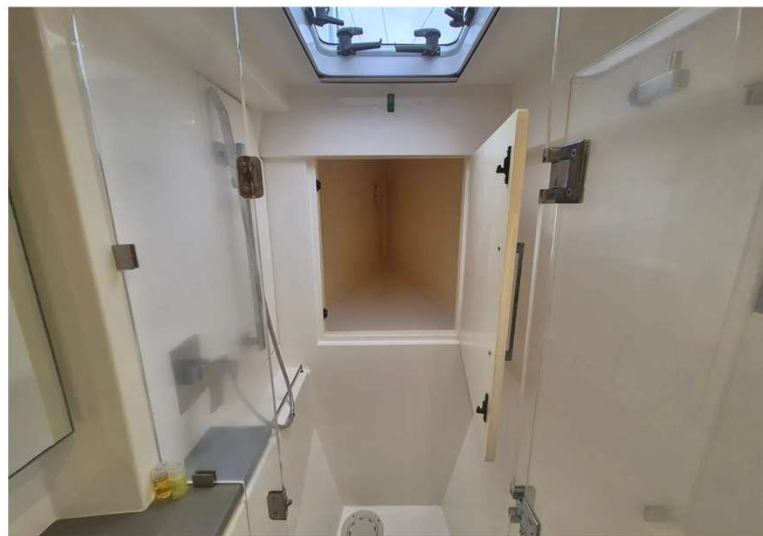
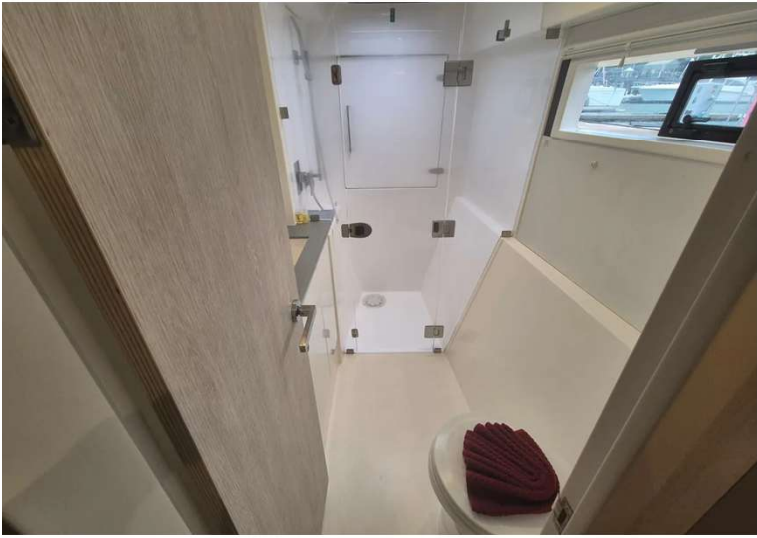
PEN MARINE SDN BHD (Co. No. 23640-X)
3A - 1 - 12 Straits Quay, Seri Tanjung Pinang,
Tanjung Tokong, 10470 Pulau Pinang, Malaysia.

info@penmarine.com
www.penmarine.com

Tel: +6012 488 0880
Tel: +6019 488 1188



PEN MARINE



PEN MARINE SDN BHD (Co. No. 23640-X)
3A - 1 - 12 Straits Quay, Seri Tanjung Pinang,
Tanjung Tokong, 10470 Pulau Pinang, Malaysia.

info@penmarine.com
www.penmarine.com

Tel: +6012 488 0880
Tel: +6019 488 1188



PEN MARINE



PEN MARINE SDN BHD (Co. No. 23640-X)
3A - 1 - 12 Straits Quay, Seri Tanjung Pinang,
Tanjung Tokong, 10470 Pulau Pinang, Malaysia.

info@penmarine.com
www.penmarine.com

Tel: +6012 488 0880
Tel: +6019 488 1188



PEN MARINE



PEN MARINE SDN BHD (Co. No. 23640-X)
3A - 1 - 12 Straits Quay, Seri Tanjung Pinang,
Tanjung Tokong, 10470 Pulau Pinang, Malaysia.

info@penmarine.com
www.penmarine.com

Tel: +6012 488 0880
Tel: +6019 488 1188



PEN MARINE



PEN MARINE SDN BHD (Co. No. 23640-X)
3A - 1 - 12 Straits Quay, Seri Tanjung Pinang,
Tanjung Tokong, 10470 Pulau Pinang, Malaysia.

info@penmarine.com
www.penmarine.com

Tel: +6012 488 0880
Tel: +6019 488 1188



PEN MARINE



**PEN MARINE SDN. BHD. IS THE REGISTERED AGENT OF THE
LANGKAWI INTERNATIONAL YACHT REGISTRY (LIYR)**

*New Yacht Registration (Private & Commercial), Entity Registration,
Ownership Transfer, Yacht Name Change, Annual Tonnage Renewal,
Deletion Certificate*

PEN MARINE SDN BHD (Co. No. 23640-X)
3A - 1 - 12 Straits Quay, Seri Tanjung Pinang,
Tanjung Tokong, 10470 Pulau Pinang, Malaysia.

info@penmarine.com
www.penmarine.com

Tel: +6012 488 0880
Tel: +6019 488 1188



PEN MARINE

MALAYSIA • THAILAND • SINGAPORE • INDONESIA • CHINA

This document is not contractual. Any information provided by the company on their website, brochure and any other related documentation is provided in good faith and offered for information purposed only and the company do not make any representation, warrant or assume any legal liability or responsibility whatsoever, express or implied, for the accuracy, adequacy, validity, reliability, availability, completeness or usefulness of any information and/or images displayed. Yacht inventory, sales and / or charter prices, and any other specifications are subject to changes at any time without prior notice. None of the text and/or image used in this brochure may be reproduced without written consent from the company.