



PEN MARINE

2010 Aicon 85

USD1,500,000



Specification

Length Overall	26 m 49 cm	Engine	2 x CAT C32
Beam	6 m 43 cm	Engine Hours	4,633 Hours
Draft	-	Drive Type	Shaft Drive
Cabins	4 (Guests)	Fuel Tank	2 x 5,950 l
Hull Material	Fiberglass	Water Tank	528 l
Location	Jakarta, Indonesia	Builder	Aicon

PEN MARINE SDN BHD (Co. No. 23640-X)
3A - 1 - 12 Straits Quay, Seri Tanjung Pinang,
Tanjung Tokong, 10470 Pulau Pinang, Malaysia.

info@penmarine.com
www.penmarine.com

Tel: +6012 488 0880
Tel: +6019 488 1188



PEN MARINE

Description

Aicon 85 was launched with the idea to introduce opulence yachting lifestyle. Elegance, power and unmistakable style: these are the principal characteristics of this ITALIAN 2010 Aicon 85 Fly, the flagship of Aicon Yachts. This elegant yacht has flowing lines that effortlessly draw the eye, showing the fluidity and the dynamism of the design. The design of the yacht highlights the volume of the airy, geometric spaces that create a harmonious balance between the exterior and the interior resulting in a unique environment, notable for its elegance and its style. The stylish look features details such as a large, rounded portholes or the large saloon window that brings you close to the sea. Aicon yachts are made in Italy and they are Class A yachts.

This Aicon 85 is equipped with 2 Caterpillar marine engines; CAT C32 ACERT (1340 kw 1800hp at 2300 rpm). The port engine records 2017 hours while the starboard engine records 2629 hours accurate as of 24th April 2025. The reverse reduction transmission is a V drive ZF 3050 type with a reduction ratio of 2034:1 mounted at the bow of the engine room. Suction is a turbo-supercharge and post cooled type. Cooling system is a water closed loop type, thermos dynamic cycle is diesel with direct injection. The boat has two 4-blade propellers. The generators supply AC 220V. Yanmar MASE S.24 24kw. The generators hours are 3173 hours and 2536 hours accurate as of 24th April 2025.

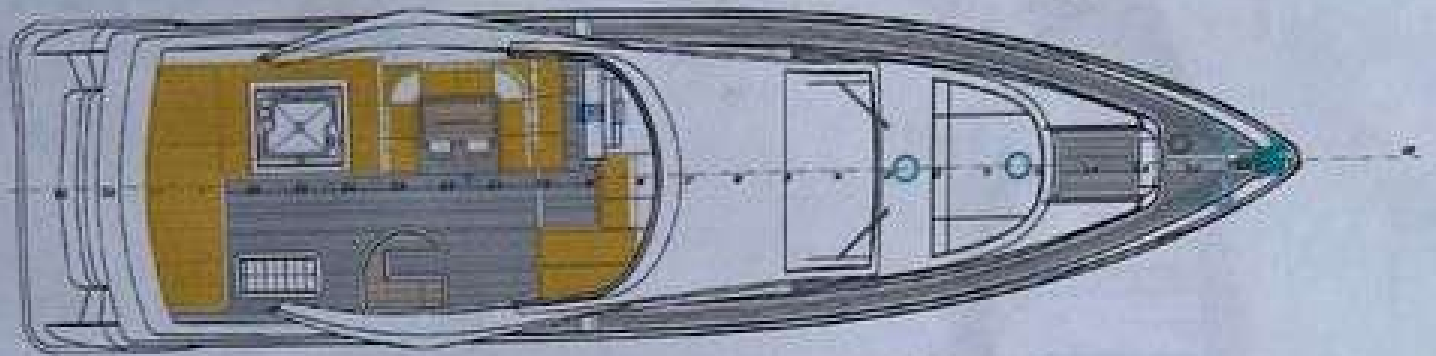
This boat has a total of 4 guest cabins that can sleep 8 comfortably. There is a full beam master cabin mid-ship with en-suite toilet and walk-in wardrobe. There is a forward bow VIP cabin with en-suite toilet. There are two twin cabins with en-suite toilet too. The vessel has two crew cabins and their own pantry area. The fly bridge comes with a crane for the davit and a jacuzzi. The antifouling, anodes change, engines and generators servicing were done in April 2024.



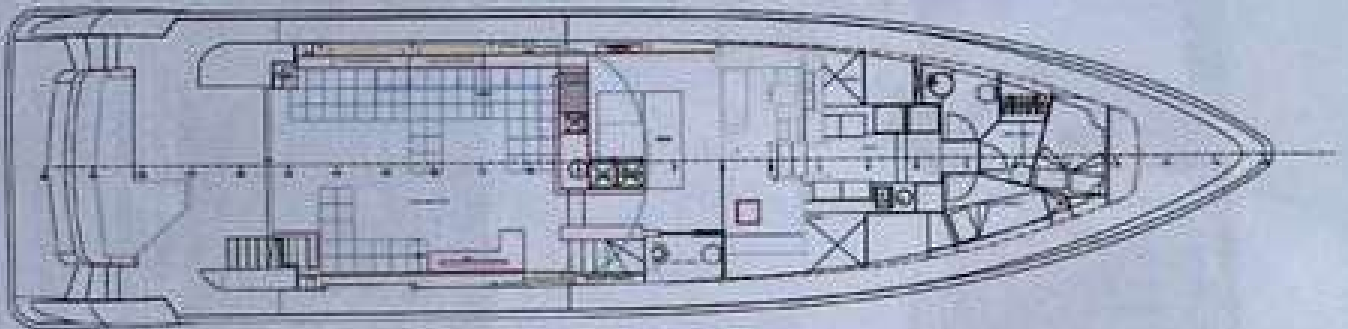
PEN MARINE

General Arrangement

FLY BRIDGE



MAIN DECK



LOWER DECK

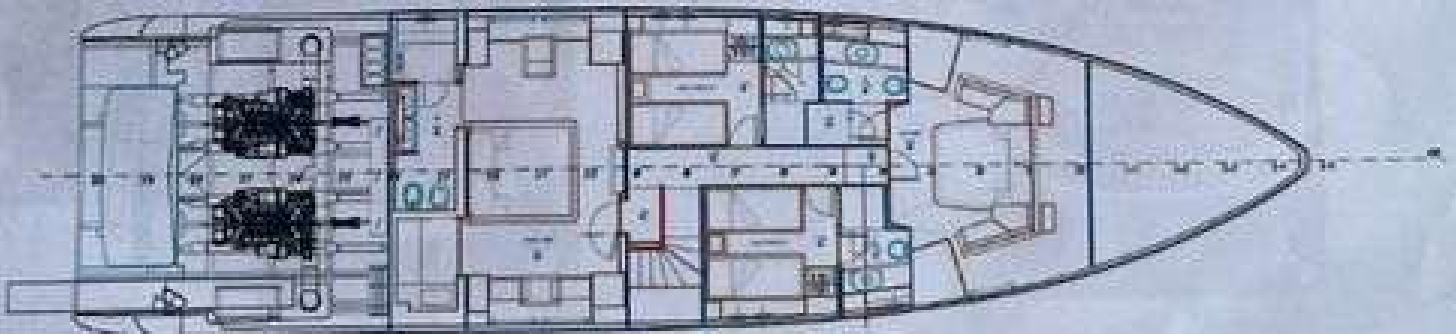


FIG. 2/4 GENERAL PLANS (VERSION 3)

AICON 85'



PEN MARINE



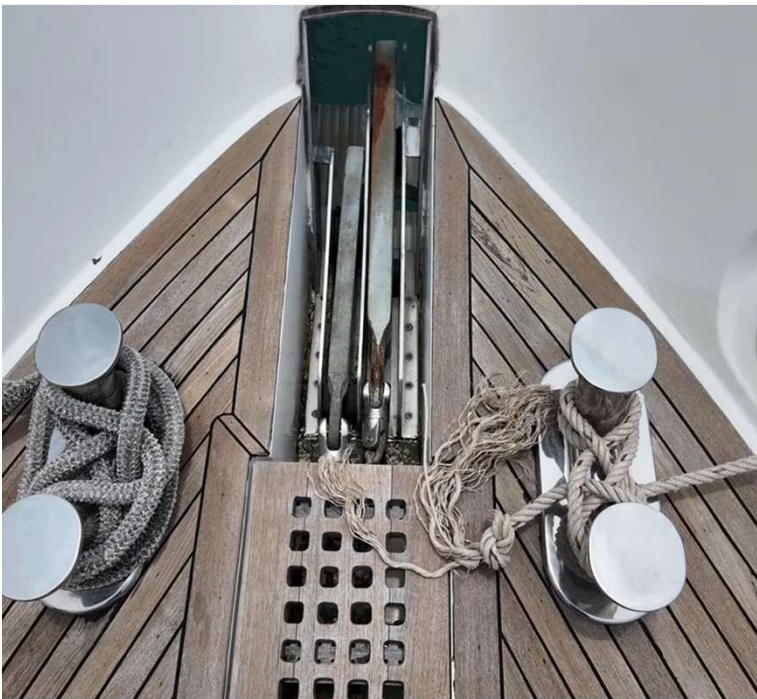
PEN MARINE SDN BHD (Co. No. 23640-X)
3A - 1 - 12 Straits Quay, Seri Tanjung Pinang,
Tanjung Tokong, 10470 Pulau Pinang, Malaysia.

info@penmarine.com
www.penmarine.com

Tel: +6012 488 0880
Tel: +6019 488 1188



PEN MARINE



PEN MARINE SDN BHD (Co. No. 23640-X)
3A - 1 - 12 Straits Quay, Seri Tanjung Pinang,
Tanjung Tokong, 10470 Pulau Pinang, Malaysia.

info@penmarine.com
www.penmarine.com

Tel: +6012 488 0880
Tel: +6019 488 1188



PEN MARINE



PEN MARINE SDN BHD (Co. No. 23640-X)
3A - 1 - 12 Straits Quay, Seri Tanjung Pinang,
Tanjung Tokong, 10470 Pulau Pinang, Malaysia.

info@penmarine.com
www.penmarine.com

Tel: +6012 488 0880
Tel: +6019 488 1188



PEN MARINE



PEN MARINE SDN BHD (Co. No. 23640-X)
3A - 1 - 12 Straits Quay, Seri Tanjung Pinang,
Tanjung Tokong, 10470 Pulau Pinang, Malaysia.

info@penmarine.com
www.penmarine.com

Tel: +6012 488 0880
Tel: +6019 488 1188



PEN MARINE



PEN MARINE SDN BHD (Co. No. 23640-X)
3A - 1 - 12 Straits Quay, Seri Tanjung Pinang,
Tanjung Tokong, 10470 Pulau Pinang, Malaysia.

info@penmarine.com
www.penmarine.com

Tel: +6012 488 0880
Tel: +6019 488 1188



PEN MARINE



PEN MARINE SDN BHD (Co. No. 23640-X)
3A - 1 - 12 Straits Quay, Seri Tanjung Pinang,
Tanjung Tokong, 10470 Pulau Pinang, Malaysia.

info@penmarine.com
www.penmarine.com

Tel: +6012 488 0880
Tel: +6019 488 1188



PEN MARINE



PEN MARINE SDN BHD (Co. No. 23640-X)
3A - 1 - 12 Straits Quay, Seri Tanjung Pinang,
Tanjung Tokong, 10470 Pulau Pinang, Malaysia.

info@penmarine.com
www.penmarine.com

Tel: +6012 488 0880
Tel: +6019 488 1188



PEN MARINE



PEN MARINE SDN BHD (Co. No. 23640-X)
3A - 1 - 12 Straits Quay, Seri Tanjung Pinang,
Tanjung Tokong, 10470 Pulau Pinang, Malaysia.

info@penmarine.com
www.penmarine.com

Tel: +6012 488 0880
Tel: +6019 488 1188



PEN MARINE



PEN MARINE SDN BHD (Co. No. 23640-X)
3A - 1 - 12 Straits Quay, Seri Tanjung Pinang,
Tanjung Tokong, 10470 Pulau Pinang, Malaysia.

info@penmarine.com
www.penmarine.com

Tel: +6012 488 0880
Tel: +6019 488 1188



PEN MARINE



**PEN MARINE SDN. BHD. IS THE REGISTERED AGENT OF THE
LANGKAWI INTERNATIONAL YACHT REGISTRY (LIYR)**

*New Yacht Registration (Private & Commercial), Entity Registration,
Ownership Transfer, Yacht Name Change, Annual Tonnage Renewal,
Deletion Certificate*

PEN MARINE SDN BHD (Co. No. 23640-X)
3A - 1 - 12 Straits Quay, Seri Tanjung Pinang,
Tanjung Tokong, 10470 Pulau Pinang, Malaysia.

info@penmarine.com
www.penmarine.com

Tel: +6012 488 0880
Tel: +6019 488 1188



PEN MARINE

MALAYSIA • THAILAND • SINGAPORE • INDONESIA • CHINA

This document is not contractual. Any information provided by the company on their website, brochure and any other related documentation is provided in good faith and offered for information purposed only and the company do not make any representation, warrant or assume any legal liability or responsibility whatsoever, express or implied, for the accuracy, adequacy, validity, reliability, availability, completeness or usefulness of any information and/or images displayed. Yacht inventory, sales and / or charter prices, and any other specifications are subject to changes at any time without prior notice. None of the text and/or image used in this brochure may be reproduced without written consent from the company.