

Sunseeker Yacht 76, 2023

GBP 4,230,527 (ex-shipping and commissioning)



Location	United Kingdom	Type/ Model Year	Luxury Flybridge Yacht/ 2023
Length Overall	23.60m	Breath Overall	5.95m
Draft	1.72m	Fuel Oil/ Fresh Water	6,000 litres/ 1,400 litres
Engine and Engine Power	2 X MAN V12 1550 HP	Generator	Second 27Kw Generator with Glendinning Cablemaster



Platinum Package (Includes the following options):

- Flybridge composite hardtop, including electric retractable centre canopy and aft electric awning.
- Sleipner stabiliser vector fin system.
- Hydraulic Telescopic gangway in Stainless steel with teak treads.
- Dimmer switches on interior and exterior overhead lighting.
- Low level LED side deck lights 10 per side.
- Second 27kW Generator with Glendinning Cablemaster.
- Flybridge Teak Decking.
- Pair of Retractable Cleats for tender on platform.
- Additional pair of aft Spring Mooring cleats.
- Hydraulic Sleipner Bow thruster 23.3hp and Hydraulic Sleipner Stern Thruster 20hp with Simultaneous dual Proportional controls.
- Two Drawer refrigerators under the bow Sunbeds.
- Wine cooler in the galley.
- Fresh water deck wash system.
- Large Grey water storage tank option.
- Safe 4 brick with Digital lock for the Master stateroom.
- Safe 2 brick with Digital lock for the Forward VIP cabin.

Beach Club Package (Includes the following options):

- Marine Electric Grill fitted in a drop down work station.
- Fold down platform seat.
- Platform overhead shower fitted to gull wing door.

16 X Additional Scatter Cushions

Add a double exterior power socket in Platform top locker on the port side for use for charging Sea Bobs

Air Conditioning Tropical upgrade to chillers and air handlers 165,000BTU

Cadorin Hard Wood Flooring to Saloon, dining and helm

Camera monitoring and docking system - Platform view infrared dome camera and two engine view infrared room cameras. Linked with multi switch to Navigation displays.

Change hand rail leather colour from the standard Black to Brown

Change the 4 standard upholstered panels at the top of the stairs down to the lower deck to 4 Eucalyptus wood panels

Chrome heated towel rail 700x400mm fitted in the Master, the Forward, the Starboard and the Port Toilet Compartments

CIN number updated to GB-XSK07828G223

Compass Swinging and adjustment with correction card

Corner seating group on the forward port side of the cockpit

Covers Package:

- Aft cockpit seating and aft cockpit table cover.
- Foredeck seating, Foredeck sunpad and table covers.
- Flybridge seating, sunpad, table and helm seat covers.

Diesel Magnetic fuel conditioning system for engines and generator

Dinghy Inflator and socket 12 volt



Electrically operated side opening window in the galley
Engine room access door from Crew cabin (not possible with Voltage regulator or Shore power convertor options)
Engine room storage cage located above the starboard engine (not available with spa tub option)
Entertainment Inverter and seamless transfer system. To run the boats entertainment system from the boats DC batteries.
Flybridge crane option when chosen. Two Liferaft 10 Man Canister stowed in a stainless steel frame one on the starboard outer side flybridge railings and the other forward of the crane on the port side deck. Flybridge Hydraulic Crane for launch and recovery of Jet Ski. 480 kg maximum lift capacity with removable stern rails
Fore deck sail canopy with 6 carbon fibre support poles
Forward flybridge seating group sunbed conversion with a fold out in-fill board and cushion. The in-fill board is supported on a teak coffee table which is on a telescopic leg.
In crew cabin fit a Miele Combined oven and microwave model number - H7640 BM in the crew cabin in the cupboard above the combined washer drier.
In Saloon and Dining areas fit Opti Grey Mirrors to window mullions on Forward and aft faces
In Saloon supply an edge bound rug using Wall Street 13 Margarita (882838) carpet (not inset in to wood floor)
In Stbd and Port Guest cabins make Pelmet above windows out of Smoked Figured Eucalyptus High sheen satin finish
Interior Wood Finish - Smoked eucalyptus figured high sheen satin finish
Key lock for cabin door for the Forward Cabin
Key lock for cabin door for the Master Cabin
Key lock for cabin door for the Port Mid Cabin
Key lock for cabin door for the Starboard Cabin
Lewmar 50Kg Delta Galvanised Anchor and 90 Metres of 12mm Galvanised anchor chain
Navigation Consoles Packages (includes the following options):
Main Console Navigation:
<ul style="list-style-type: none"> • Simrad IS42 Speed/Depth Instruments with Airmar B744V depth/speed/temperature transducer and Simrad Sonarhub fishfinder Module. • Simrad AP44 Autopilot system. • Two 19" Simrad MO19T displays. Simrad NSO processor and Simrad OP50 Controller and SD card reader. • Simrad Halo 4 Pulse Compression Radar 64nm 4 foot open array radar scanner. • Simrad RS100 VHF Radio with DSC function with 2.4 metre whip antenna. • Simrad Automatic Identification System NAIS500 Class B AIS Transponder system with dedicated VHF and GPS receiver. • Built in wireless connectivity links the MFD to mobile devices for remote viewing and control.
Flybridge Console Navigation:



- Simrad IS42 Speed/Depth Instrument.
- Simrad AP44 Autopilot system.
- Two Simrad NSS16 Evo3S colour 16" Multifunctional touch screen Chart Plotter displays.
- Simrad HS100 VHF Radio with DSC function.

Make and fit a bespoke storage cupboard in Smoked Figured Eucalyptus High sheen satin finish with a frosted glass screen in between the helm and the galley.

Master Cabin table lamp to be Porta Romana CHARCOAL Lava Lamp GLB40 with SHADE 12 1D AFRICAN FEZ WITH CARD LINING

Parasol with offset post at foredeck with two sockets and dedicated stowage

Performance AV Package (includes the following options):

1. Saloon (Forward and Aft Galley Option with TV on fall and rise) Samsung 55" UHD Smart 4K Television with Apple TV app and Airplay 2 included. 4K UHD Blu-ray player. Surround system with a Proficient Soundbar powered by a Sonos Amp and Sonos Subwoofer. B&W rear speakers with Sonos Amp.
2. Saloon (Aft Galley with Starboard fixed TV Option) Samsung 55" The Frame QLED TV with Apple TV app and AirPlay 2 included. 4K UHD Blu-ray player. Surround Sound with two Sonos Amps driving four B&W ceiling speakers with Sonos Sub.
3. Master stateroom Samsung 55" UHD Smart 4K Television with Apple TV app and Airplay 2 included. 4K UHD Blu-ray player with a Proficient Soundbar powered by a Sonos Amp and Sonos Subwoofer.
4. Forward cabin Samsung 43" UHD Smart 4K Television with Apple TV app and Airplay 2 included. 4K UHD Blu-ray player and a Proficient Soundbar powered by a Sonos Amp.
5. Starboard Guest cabin Samsung 32" HD Smart Television with built in Apple TV App and Airplay. Sonos Amp with Fusion ceiling speakers.
6. Port Guest cabin 24" HD Television with a Sonos Amp with Fusion ceiling speakers. Apple TV
7. Crew cabin 24" HD Television with Fusion Apollo Radio with Bluetooth and Airplay functionality and Fusion ceiling stereo speakers. Sonos linked to the cabin AV system.
8. Aft Cockpit zone with Four Sonance Extreme Speakers with Sonos Amp.
9. Fly-bridge zone with Four Sonance Extreme Speakers with Sonos Amp.
10. Fore deck zone with Two Sonance Extreme Speakers with Sonos Amp.

The exterior zoning audio is controlled via the Sonos App on a supplied iPad tablet.

Note: The router is to provide access to the internet via Wi-Fi or Cellular data and to allow the user to link to an available marina Wi-Fi network. The boat can be fitted with up to 2 SIM cards (user supplied) to access the internet when in range of 3G-4G data signals. This system will give data communications only. Voice communication is not covered. Air time, service agreements and SIM cards shall be the responsibility of the Client.

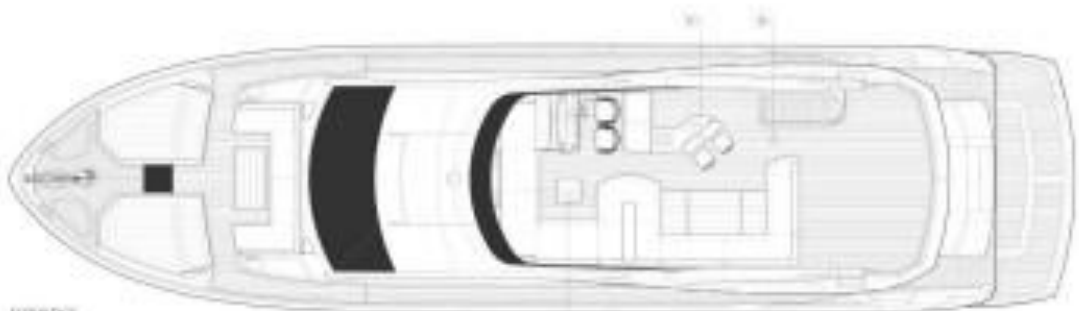
Siemens Integrated Slimline Dishwasher IQ300



Refrigeration Inverter system to run the boats refrigeration goods from the boats DC batteries
Special Teak Foredeck table with folding leaves fitted on a manual telescopic polished stainless steel leg. Table positioned 100mm forward of U shaped seating as fitted on 1892176
Spradling Hitch or Sunbrella premium exterior upholstery upgrade
Sprung mattress for beds in the Master Cabin the Forward Cabin the Starboard Mid Cabin and in the Port Mid Cabin
Stainless steel dual voltage Vitrifrigo. Refrigerator above with lower freezer/refrigerator compartment below.
Stern Docking Lights
Teak forward Side Decks to include the anchor deck and Seating group deck
Tecma Silence Plus 2G-24V toilet with manually controlled bidet wash for all toilets
Third station engine control located in aft cockpit (with engine throttles, stop and start and thruster control). Not available with third station joystick control.
Towels - Extra Set (1 Bath 1 Face and 1 Hand Towel) for the Aft Master Cabin Toilet and Shower Compartment
Towels - Extra Set (1 Bath 1 Face and 1 Hand Towel) for the Crew Cabin
Towels - Extra Set (1 Bath 1 Face and 1 Hand Towel) for the Forward Toilet and Shower Compartment
Towels - Extra Set (1 Bath 1 Face and 1 Hand Towel) for the Port Mid Cabin Toilet and Shower Compartment
Towels - Extra Set (1 Bath 1 Face and 1 Hand Towel) for the Starboard Mid Cabin Toilet and Shower Compartment
Two (2x) additional parasol sockets fitted on bathing platform. 1x either side.
Two single beds with electrically operated slider to form an occasional double in the Port Mid Cabin
Underwater lights x 4
Upgrade carpet to B Wall Street Margarita 882838
Upgrade Galley countertop to P Quartz Silestone Eternal Calacatta Gold Polished
Upgrade standard venetian blinds to Roman blinds with blackout linings
Interior Upholstery Upgrades in some areas across the boat.
Water purifier for icemaker



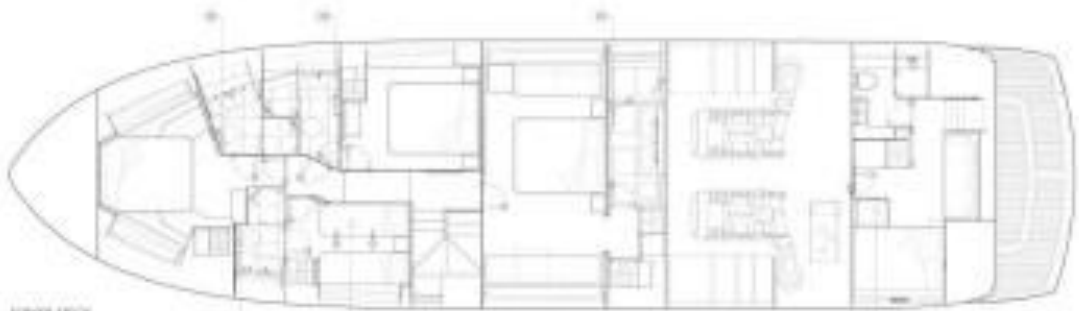
PROFILE



DECK EDGE



MAIN DECK



LOWER DECK







