

PRINCESS S78 (2021)

Euro 4,600,000



Location	Sanremo, Italy	Builder	Princess
LOA	24.66m	Beam	5.76m
Draft	1.77m	Hull	Fiberglass
Engine	Twin MAN V12-1900	Engine Hours	185
Cruising Speed	24knots	Max Speed	37knots

Optional Equipment Fitted

Dimension:

- Length overall: 80' 11" 24.66m
- Beam: 18' 11" 5.76m
- Draft: 5' 10" 1.77m
- Displacement: 53.7 tonnes
- Fuel capacity: 6000 litres
- Water capacity: 1350 litres

Engines and Drive:

- Twin MAN V12 (2 x 1900) diesel engines
- Engine Running Hours: 185 (September 2022)
- Joystick Control (XENTA - Dual Station) (operates both engines and bowthruster)

Hydraulics:

- Hydraulic system consisting of separate engine driven hydraulic pumps allowing any system to be supplied with hydraulic power from either engine. Including hydraulic anchor winch and 300 kgF hydraulic bow thrusters (in place of standard) 300 KgF hydraulic stern thrusters and hold function docking system. All with dual station controls

Stabilisation:

- Gyro stabilisation (Seakeeper 16)

Certification/Compliance:

- Craft built to MCA (Small Commercial Vessel Regulations MGN280(M)) Category 2 classification and including all safety equipment (i.e. to charter specification)

Hull Colour:

- White

Interior Furniture:

- Walnut interior wood Satin finish (saloon, galley & helm floors are walnut as standard)

Layout:

- Combination toilet/bidet in Master Stateroom in place of standard toilet
- Port cabin to have double berth conversion with powered sliding mechanism on inboard berth
- Sliding helm table (as per 30M) at forward port helm seating area

Galley:

- Galley worktop to be in Organic White quartz

Bathroom:

- All bathroom worktops and floors to be Carrara Optional Equipment Fitted White (Stateroom - gloss finish worktops and floors as standard, Guest cabins - gloss finish worktops and satin finish floors)

Deck Hardware:

- Up/down electro hydraulic transom platform with 550Kg SWL fitted as standard with tender launch system fitted in the garage
- Passerelle to be wired via the master switch in addition to its own switch
- Side entry gates to aft port & starboard side decks in addition to standard passerelle
- Electrically operated sun awning to aft end of cockpit (Grey fabric)
- Electrically operated sliding roof over forward saloon area (incorporating standard skylights with electric blinds)
- Stainless steel keyway plates and chock mounting system on bathing platform for later fitting of wet bike
- Stainless steel anchor in place of standard (50Kg)
- Third station controls in cockpit (engine controls, thruster controls and engine emergency stop)
- Ketal Zig Zag coffee table (with tray and deck mounted fixing point) for foredeck - (Tray top: 678 bone, Rope Frame: 420 Light Grey rope)

Generator:

- ONAN 27kW/50Hz generator fitted in place of standard (recommended if gyro stabiliser is fitted)
- Additional 22.5kW/50Hz generator
- Running Hours: 300 (September 2022)

Electrical:

- Continental 220v/240v sockets
- Underwater transom lights (4 Lumishore SMX53)
- Underwater lighting to aft hull sides (4 Lumishore SMX53)(2 per side)
- Freshwater maker (190 litres/hour) complete with remote instrumentation and service/spares kit
- Lava Brick BBQ in place of standard
- Heated towel rail in bathroom (4)
- Underfloor heating in bathrooms (4). Please note, not fitted in shower areas

Optional Equipment Fitted

- Wine cooler fitted above standard washer/dryer in owner's lobby
- Icemaker fitted in sportbridge wetbar
- Sub zero drawer fridges fitted in galley
- 110 litre fridge in crew mess unit
- Combination Microwave/grill fitted in crew mess
- Optional lamp in Master Stateroom table lamp positioned at forward end of port vanity unit (Penta C'hi table lamp in Sand Glass finish with satin nickel metal base)

Audio Visual & Communications:

- Deck Saloon - 55" UHD LED TV on power lift Naim Uniti Atom audio system with Bluetooth, multi-zone streaming capability and dedicated app. Blu-ray UHD CD/DVD player. Paired with 2 Focal speakers and subwoofer
- Owners stateroom - 40" UHD LED TV, Naim Uniti Atom audio system with Bluetooth, multi-zone streaming capability and dedicated app. Blu-ray UHD CD/DVD player, Paired with 2 Focal speakers and subwoofer
- Sportbridge – Naim Uniti Atom audio system with Bluetooth, multi-zone streaming capability and dedicated app. Paired with 2 Bowers & Wilkins waterproof speakers (no HDMI connectivity)
- Cockpit seating area - Naim Uniti Atom audio system with Bluetooth, multi-zone streaming capability and dedicated app. Paired with 2 Bowers & Wilkins waterproof speakers (no HDMI connectivity)
- System includes onboard Ethernet network with 4G internet capability access to all areas. This improves connectivity via dedicated app
- Forward Guest cabin -32" HD LED TV, Naim Uniti Atom audio system with Bluetooth, multi-zone streaming capability and dedicated app. Blu-ray CD/DVD player. Paired with Focal speakers (2) and subwoofer
- Starboard cabin - 28" HD LED TV, Naim Uniti Atom audio system with Bluetooth, multi-zone streaming capability and dedicated app. Blu-ray CD/DVD player. Paired with Focal speakers (2)
- Port cabin - 22" HD LED TV, Naim Uniti Atom audio system with Bluetooth, multi-zone streaming capability and dedicated app. Blu-ray CD/DVD player. Paired with Focal speakers (2)
- Crew cabin - 22" HD LED TV, Naim Uniti Atom audio system with Bluetooth, multi-zone streaming capability and dedicated app. Blu-ray CD/DVD player. Paired with Focal speakers (2)
- Foredeck seating walk-through area - Naim audio system with Bluetooth, multi-zone streaming capability and dedicated app. Paired with 2 Bowers & Wilkins waterproof speakers (no HDMI connectivity)

Navigation:

- Four Raymarine Axiom XL16 (15.6") colour multifunction displays (i.e. 2 at each helm position) in place of standard
- Raymarine Magnum HD colour radar, 12kW pedestal with 48" open array scanner in place of standard 4kw
- Raymarine remote control keypad (RMK-10) at upper and lower helms
- Raymarine 7" repeater display in crew cabin
- European version plotter
- Raymarine AIS 700 Class B transponder interfaced with chartplotter and with 8ft (2.4m) aerial
- International VHF
- Raymarine night/day CCTV camera in engine room and one on aft point of cockpit overhang to allow viewing of platform - connected and viewed from both upper and lower Raymarine screens

Airconditioning:

- Airconditioning/heating reverse cycle (186,000BTU) suitable for temperatures to 40°C (tropical) is fitted as standard. With controls in all cabins and outlets in all areas (including bathrooms)

Mosquito Screens:

- Mosquito screens for all portlights

Exterior Upholstery / Canvas / Covers:

- Cockpit and Sportsbridge fixed seating with no contrast. Sportsbridge helm seats, Foredeck and Cockpit Sunbeds with contrast panelling and piping.

Optional Equipment Fitted

- Foredeck seating with contrast piping in Comfort Exterior III Vogue with Met, Vogue or Hitch Contrast
- Fit reticulated foam to all standard exterior Cockpit, Sportsbridge and Foredeck seating/sunpads in place of standard - Does not include Sportsbridge helm seats or the Roda or Paola Lenti furniture
- Exterior covers - Grey canvas
- Bimini top - Grey canvas
- Additional charge for Bimini top to have dimmable LED overhead lighting (switched from console)
- Additional charge for Bimini to be electro-hydraulically powered
- White vinyl windscreen covers in place of standard black mesh
- Foredeck sun awning with carbon fibre poles (awning to match cockpit/sportbridge covers)

Accessories:

- 8 place setting of China, Cutlery & Glasses are supplied as standard

Spares:

- 1Kg Hull/Superstructure gelcoat
- Spare set of anodes (hull, hydraulic platform & swim ladder)

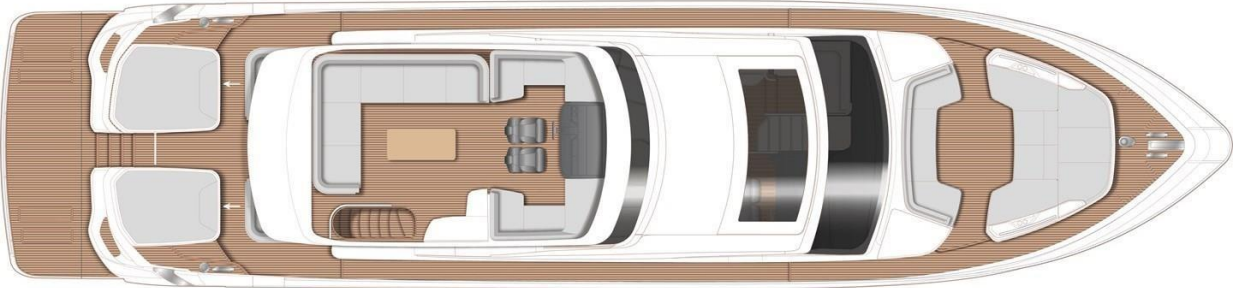
Sea Delivery:

- Fuel - This craft will be filled with fuel prior to despatch from the shipyard (6,000 litres)
- Compass adjuster to swing both compasses
- Supply 5 litre container of engine oil

Tender:

- Williams 435SJ – includes:
- Launch & load into garage
- Upholstery grey to match mother vessel
- Deck white
- Helm white
- Hull white
- Tubes standard off white and neptune grey
- Milan upholstery
- Led deck lights
- Bimini in grey; protective cover in grey
- Tow points and straps
- Paddle
- Teak footwells and platform

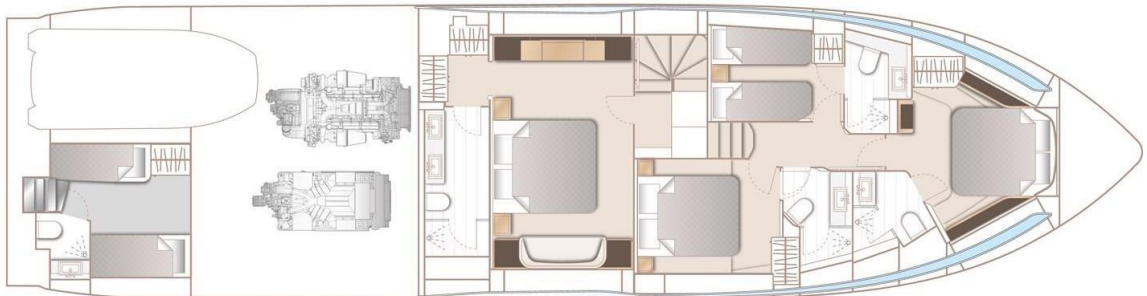
Layout



Flybridge



Main Deck



Lower Deck

Photo Gallery



Exterior



Exterior



Exterior



Exterior



Exterior



Exterior

Photo Gallery



Exterior



Cockpit



Cockpit



3rd Station Controls



Cockpit (Looking Aft)



Galley

Photo Gallery



Dining Area



Saloon



Saloon (Looking Aft)



Saloon



Saloon (Looking Aft)



Lower Helm

Photo Gallery



Stairwell to Master Cabin



Forward Seating



Passageway



Master Cabin



Master Cabin



Master Cabin

Photo Gallery



Vanity Desk



Master Cabin Bathroom



Forward Cabin



Forward Cabin



Forward Cabin Bathroom



Starboard Cabin

Photo Gallery



Port Cabin



Port Cabin Bathroom



Side View



Foredeck



Foredeck



Flybridge



Flybridge

Photo Gallery



Flybridge



Flybridge



Wet Bar



Flybridge Helm